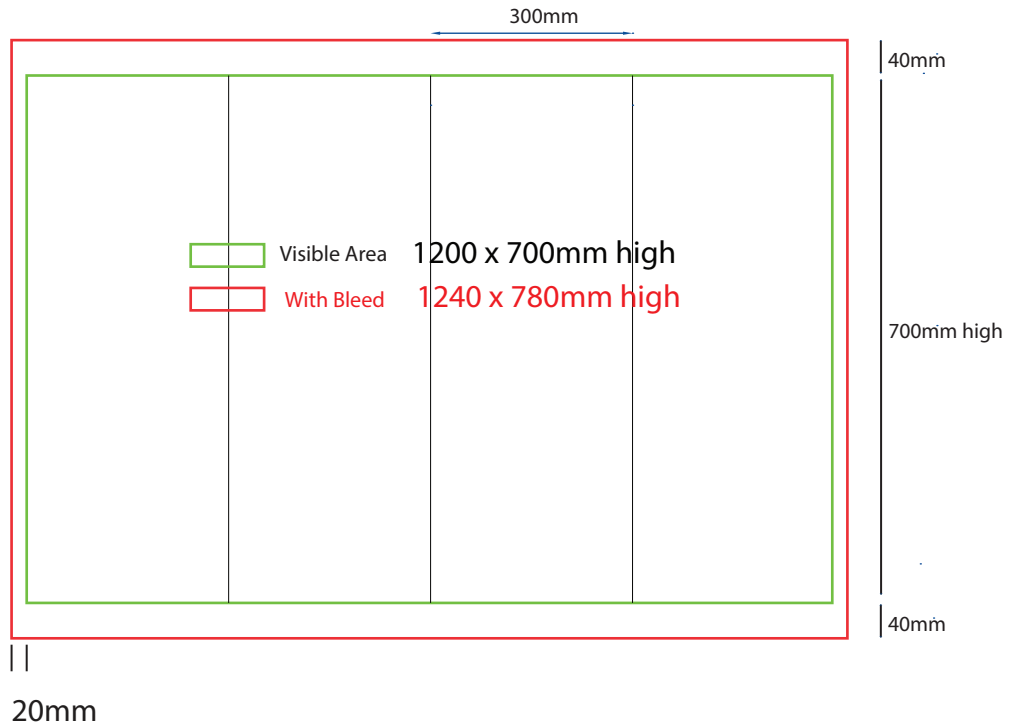


# Plinth Sock

300mm sq x 700mm high



## How to Setup Print Ready Artwork

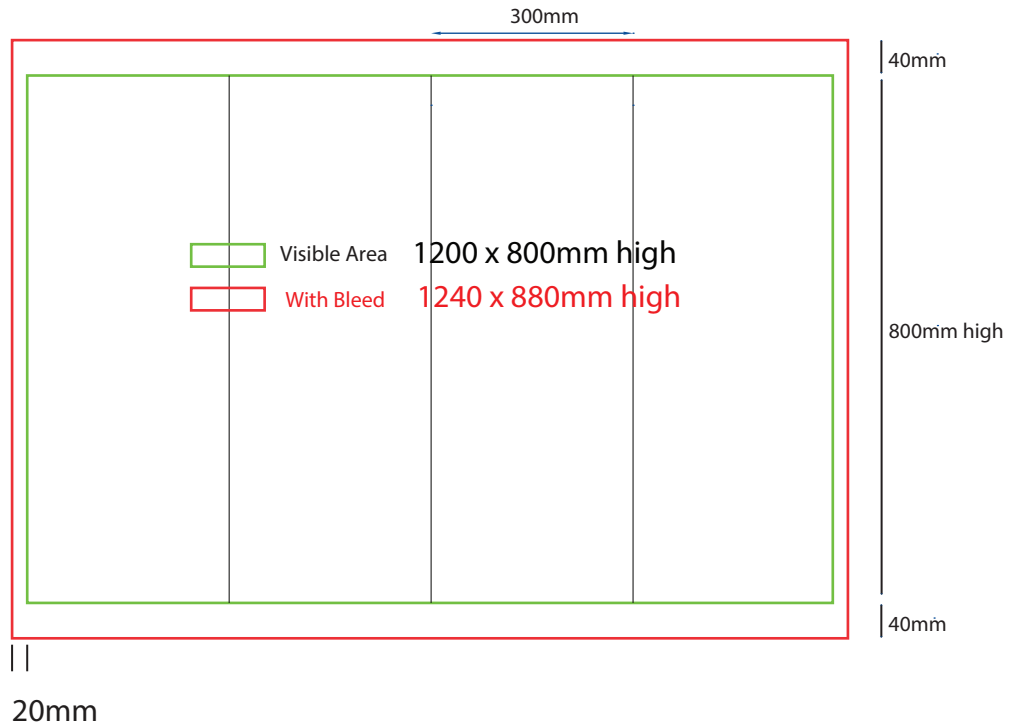
- Convert all text to outlines
- Embed all images and elements as per template
- No trim, crop or registration marks
- Artwork supplied as a PDF
- Bitmap images no less than 130 DPI

## Sending Us Your Files

- Files under 10MB email to [design@maxdisplays.com.au](mailto:design@maxdisplays.com.au)
- Over 10MB files, send download link to our email or click the link below to upload files: [www.maxdisplays.com.au](http://www.maxdisplays.com.au)

# Plinth Sock

300mm sq x 800mm high



www.maxdisplays.com.au

### How to Setup Print Ready Artwork

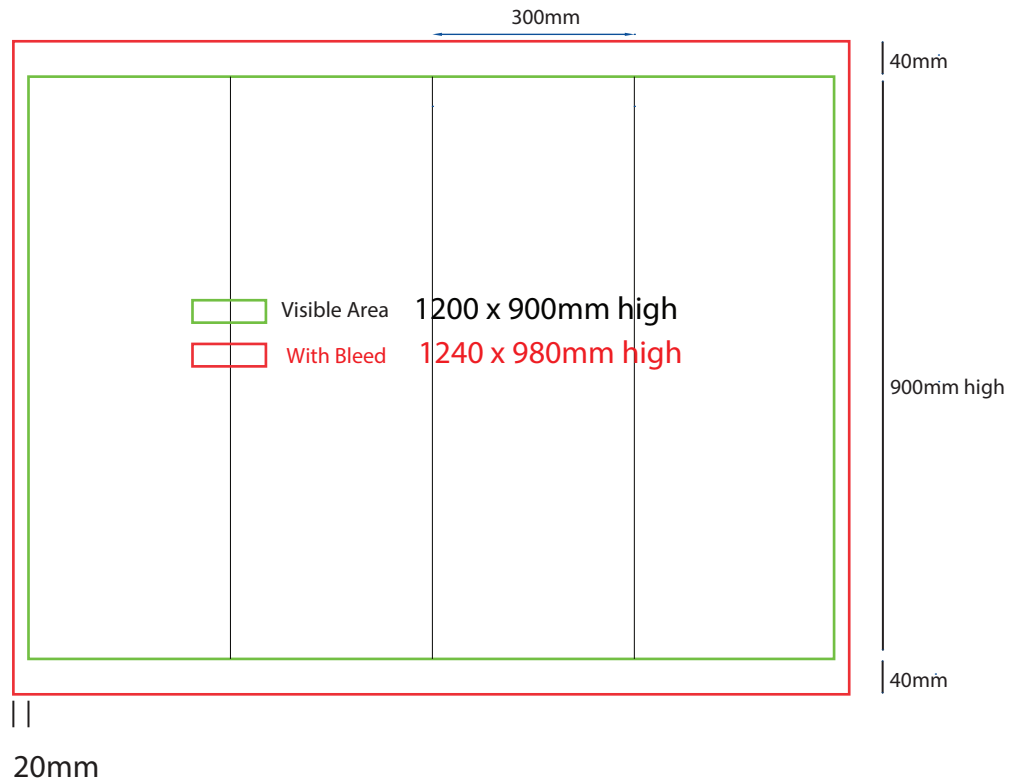
- Convert all text to outlines
- Embed all images and elements as per template
- No trim, crop or registration marks
- Artwork supplied as a PDF
- Bitmap images no less than 130 DPI

### Sending Us Your Files

- Files under 10MB email to [design@maxdisplays.com.au](mailto:design@maxdisplays.com.au)
- Over 10MB files, send download link to our email or click the link below to upload files: [www.maxdisplays.com.au](http://www.maxdisplays.com.au)

# Plinth Sock

300mm sq x 900mm high



www.maxdisplays.com.au

### How to Setup Print Ready Artwork

- Convert all text to outlines
- Embed all images and elements as per template
- No trim, crop or registration marks
- Artwork supplied as a PDF
- Bitmap images no less than 130 DPI

### Sending Us Your Files

- Files under 10MB email to [design@maxdisplays.com.au](mailto:design@maxdisplays.com.au)
- Over 10MB files, send download link to our email or click the link below to upload files: [www.maxdisplays.com.au](http://www.maxdisplays.com.au)